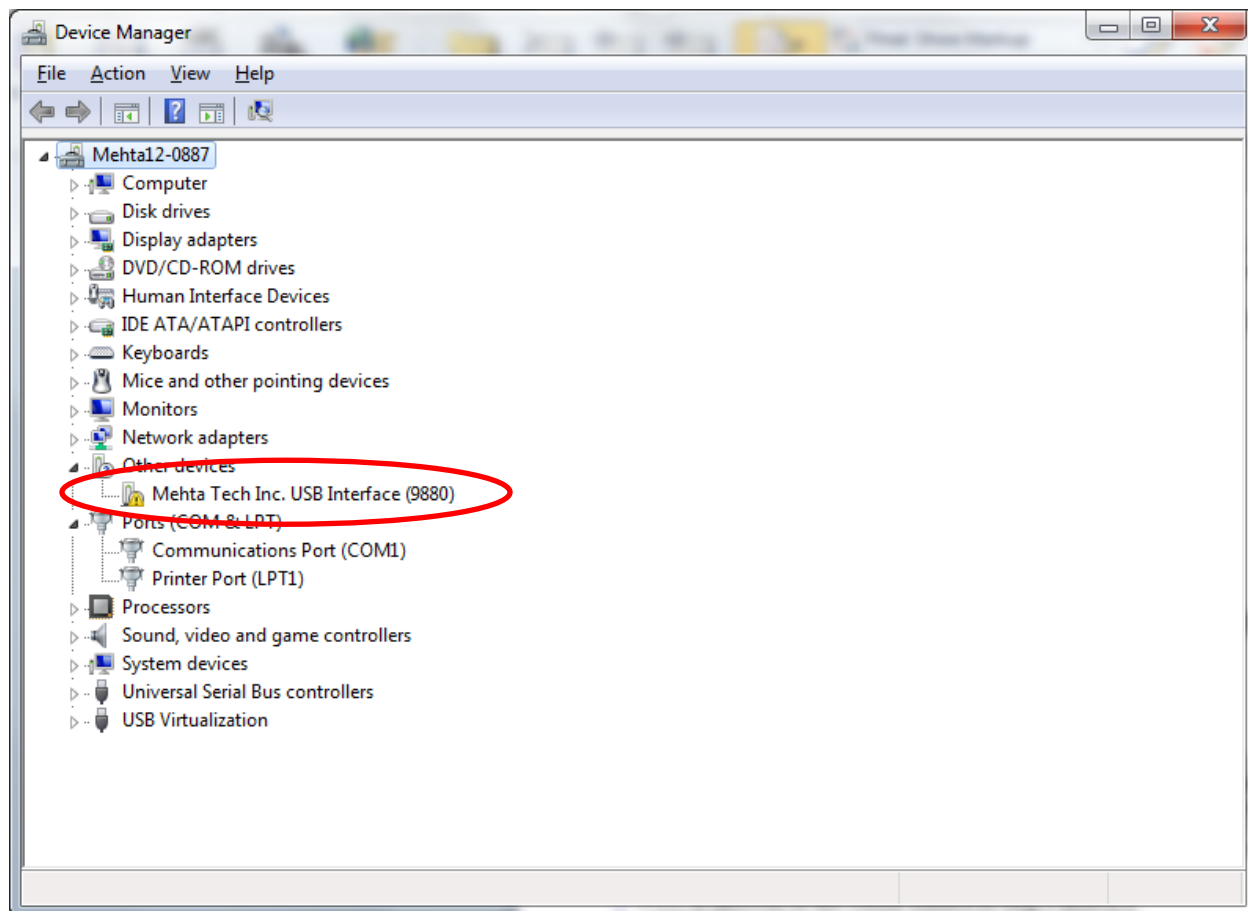



## Procedure for installing DFR front-panel USB communications driver for use with Windows 7

**Note:** this procedure is ONLY required if you are using a PC with the Windows 7 operating system installed. This procedure describes installation via the [www.MehtaTech.com](http://www.MehtaTech.com) website. After selecting the 'Downloads' tab, select 'USB port driver for Windows 7'. Type in your user name and password.

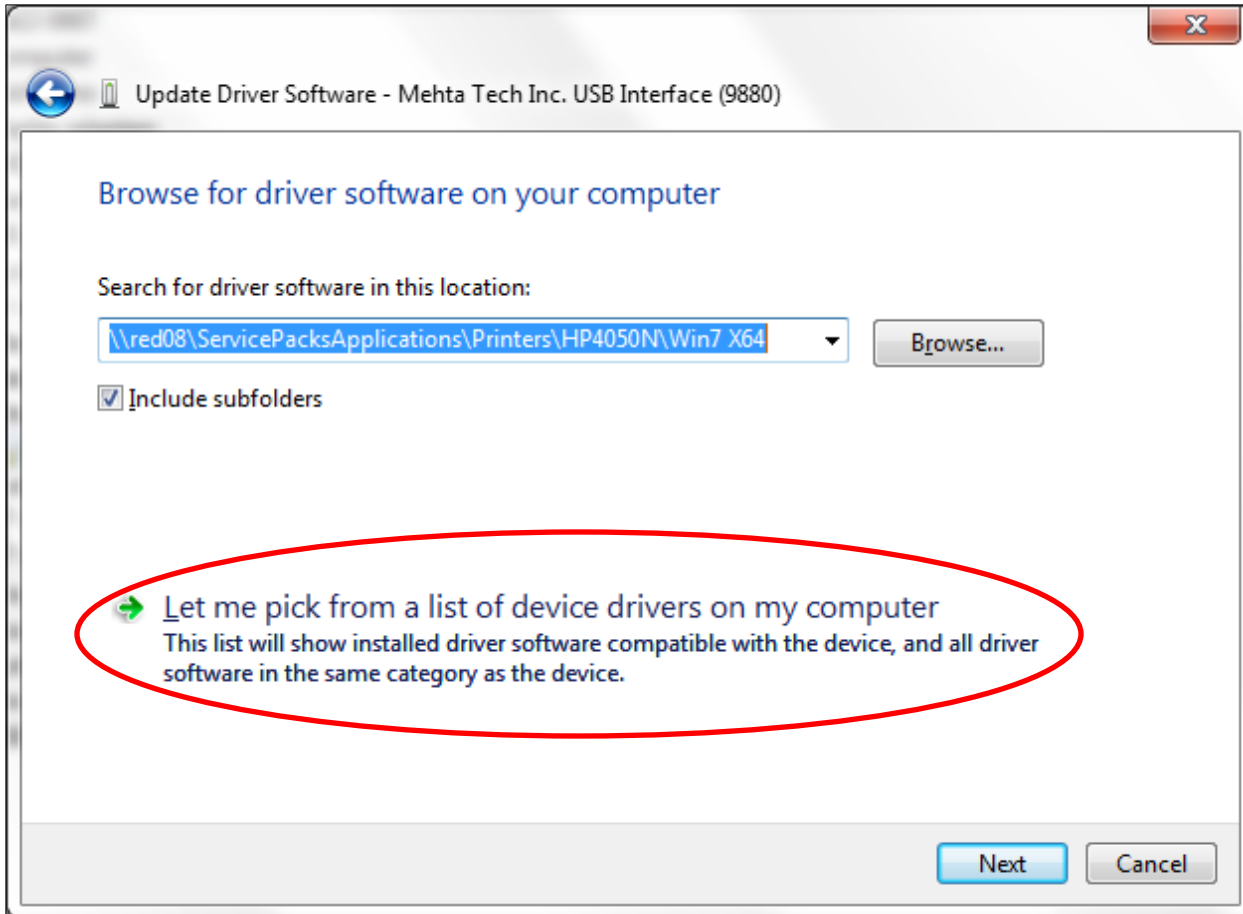
1. Click on 'USB driver' and save the file to a unique folder on your PC's hard drive.
2. Unzip the slabvcp.zip file into the same folder you created above.
3. In Windows Explorer, or on your Desktop, right-click on 'Computer'. Select 'Properties', then click on 'Device Manager'.
4. Plug in the USB cable to the DFR's front port 'Local Com' and then into the PC's USB port.
5. Right-click on the 'Mehta Tech Inc. USB Interface (9880)' located under 'Other devices' and select 'Update Driver Software'.



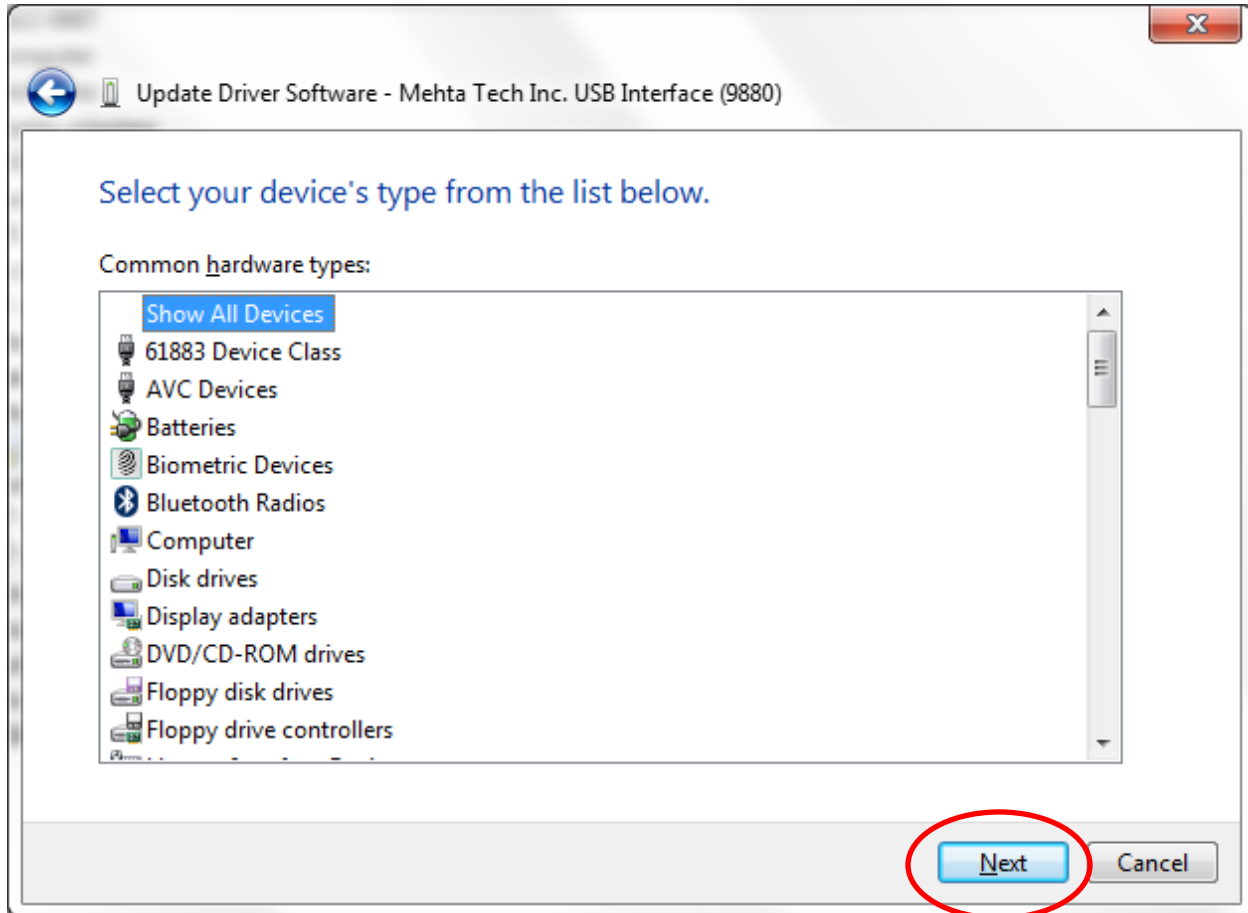
6. In the next window, select:

 **Browse my computer for driver software**  
Locate and install driver software manually.

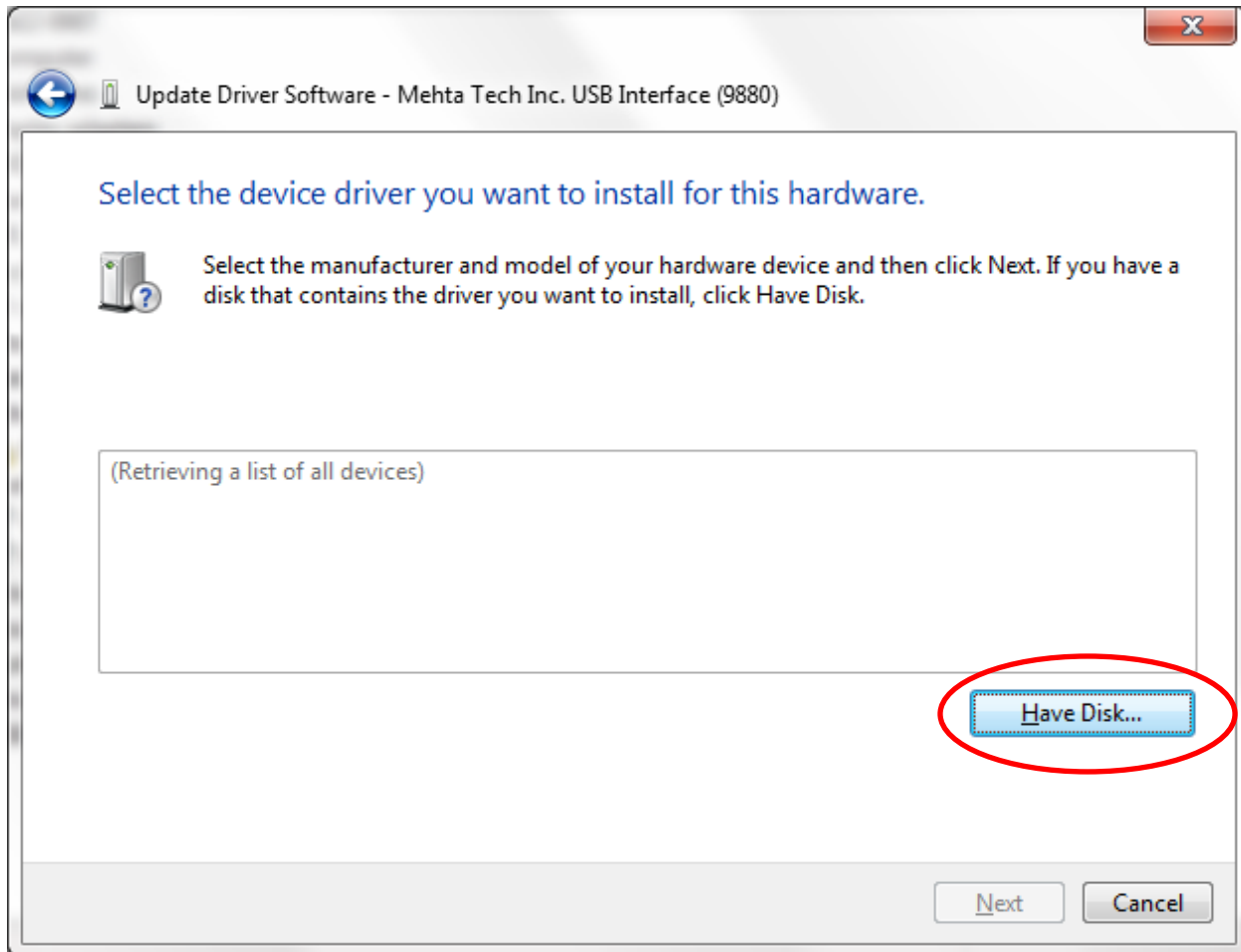
7. Click on 'Let me pick from a list of device drivers on my computer'.



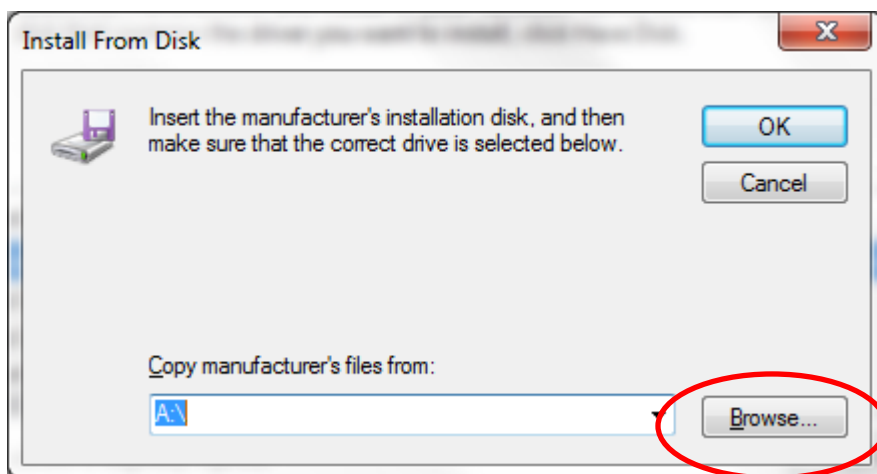
8. Select Next.



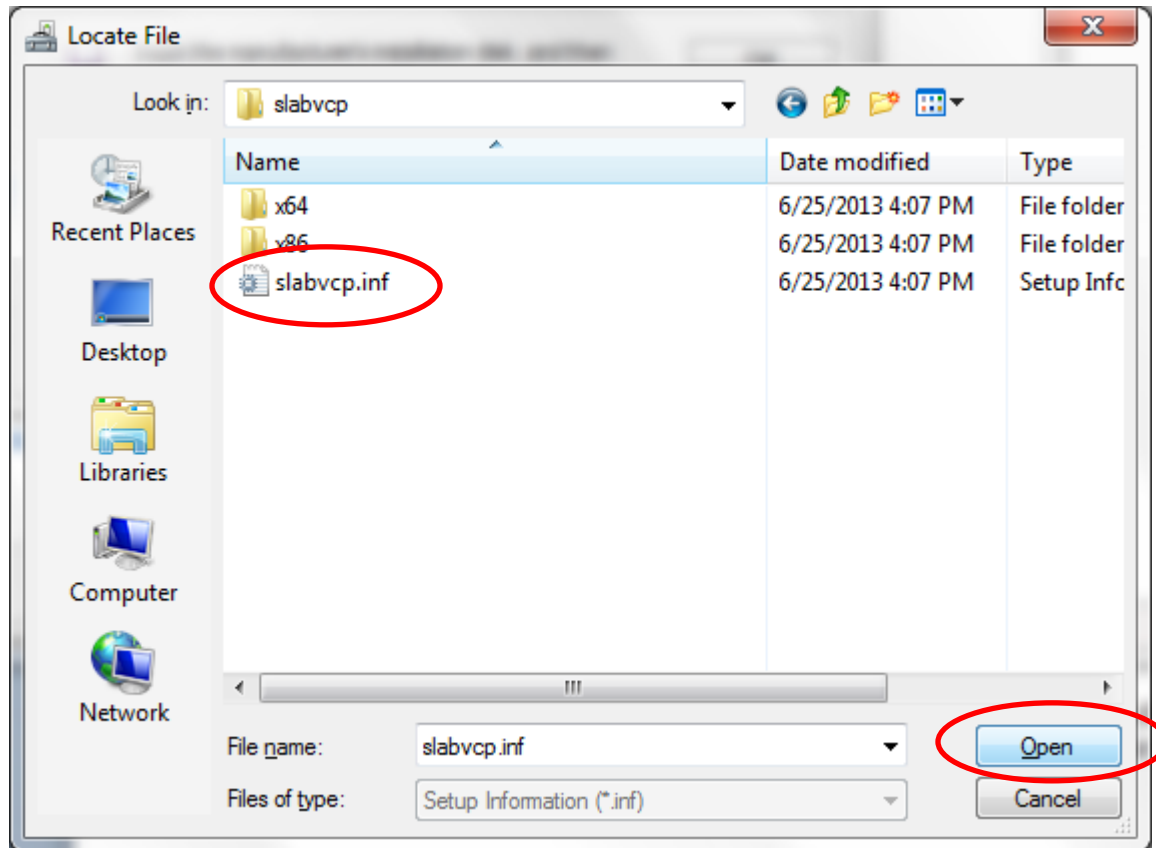
9. Click on Have Disk.



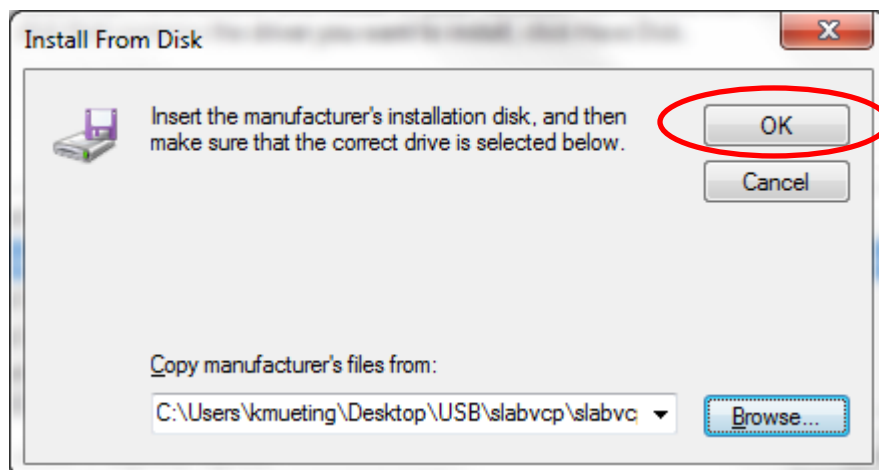
10. Browse to the folder you created in step 1.



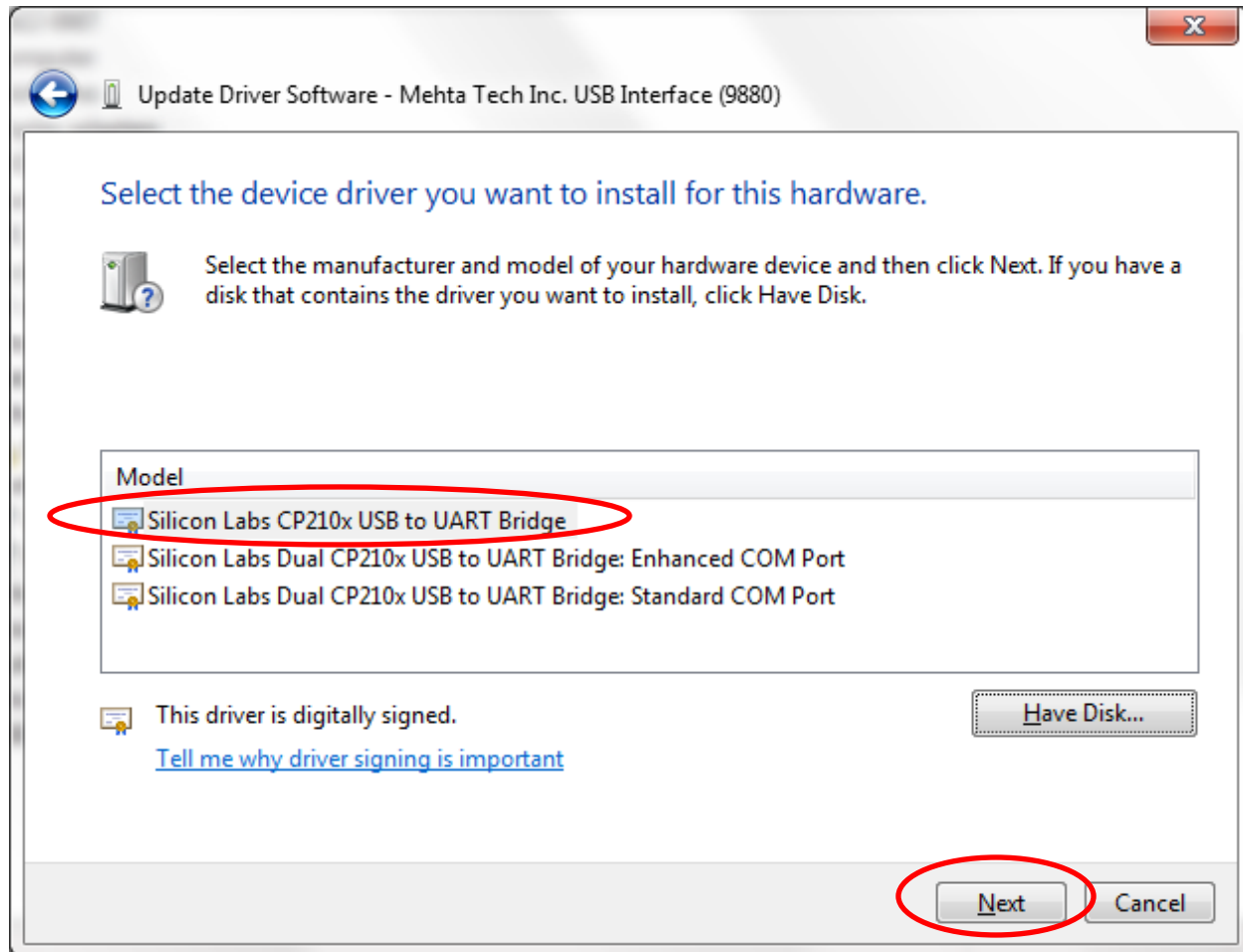
11. Select slabvcp.inf and click open.



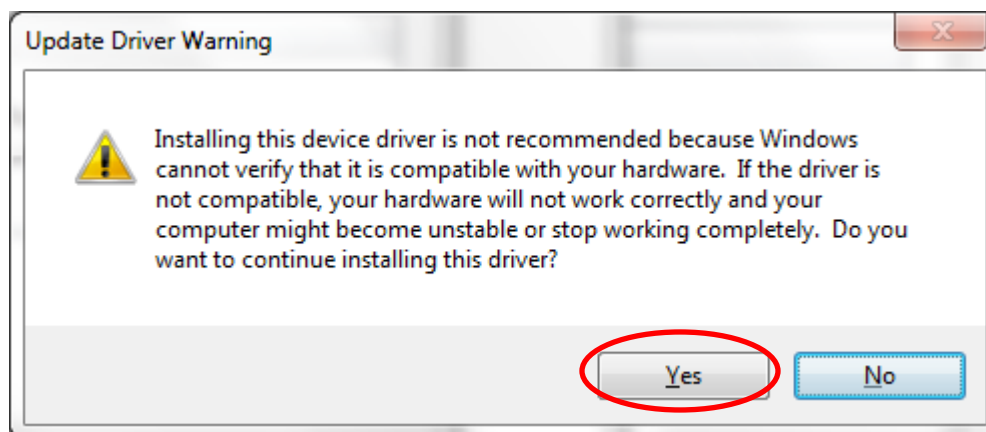
12. Click OK.



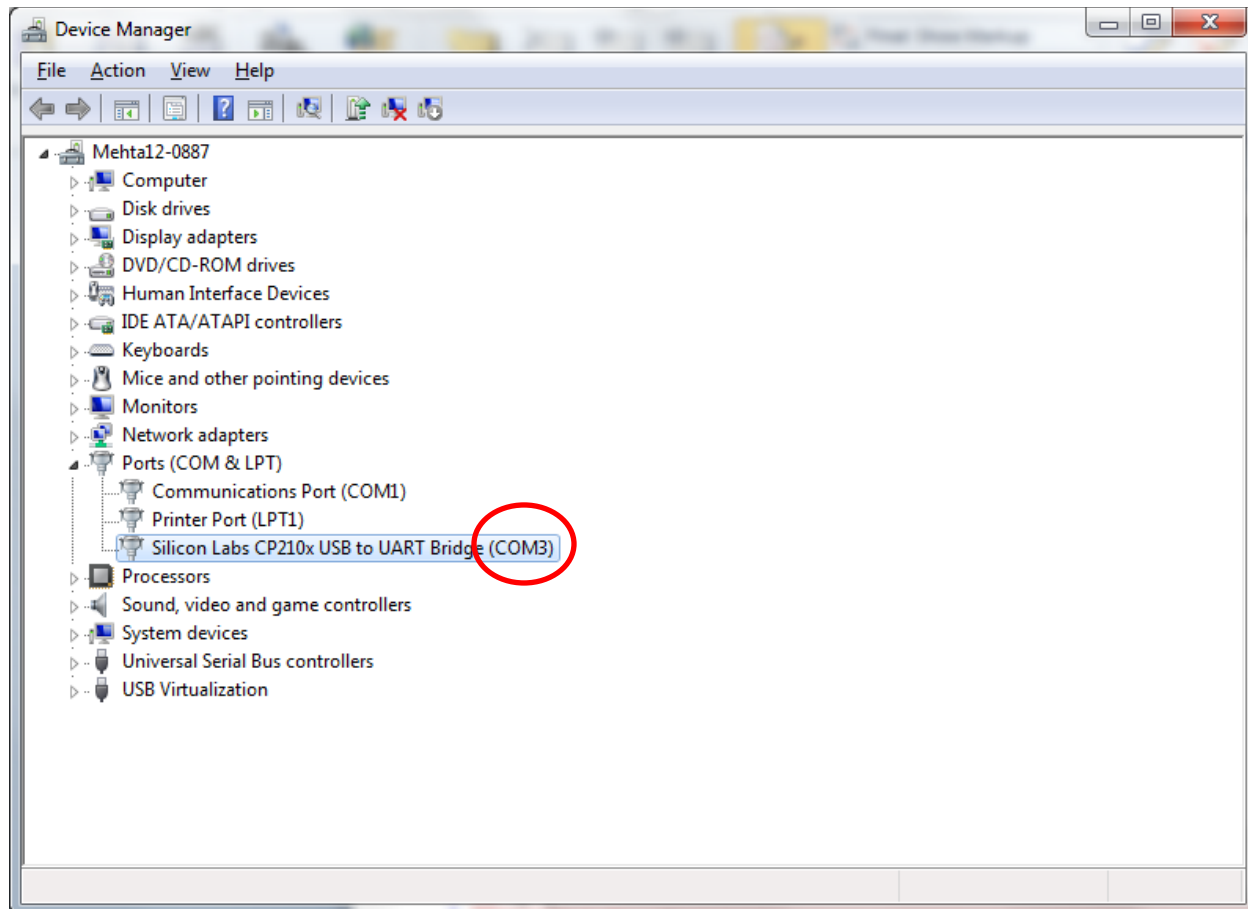
13. Select the 'Silicon Labs CP210x USB to UART Bridge', then click Next.



14. Click Yes.



15. Click Close.
16. In Device Manager, expand the Ports (COM & LPT) entry. You should now have a COM port number assigned and communications should be established.



17. Close Device Manager.
18. Start Polycomm32. Go to Configure / Com Ports. Check to see if the COM port is already assigned.
19. Go to Configure / Stations and enter the new COM port number in the Station list.
20. Set the COM port speed to 57600bps.